

pneumatic solutions

The lack of standardized wound therapy methods and care contributes to unnecessarily long treatment and healing times. In addition, these factors contribute to excessively high costs borne by patients and health plans. Various new technologies and discoveries are bringing to patients the ability to work with their doctors to get wounds under control with pneumatics.

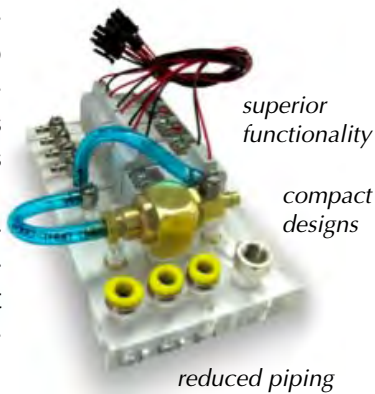
wound therapy

Hyperbaric Oxygen Therapy for Wound Healing (HBO2)

Oxygen is one of the most versatile and powerful agents available to the modern medical device manufacturers. The therapeutic use of oxygen under pressure has been used to assist wound healing for almost 40 years. HBO2 provides pharmacological doses of oxygen to stimulate the tissue, thereby promoting a much quicker healing process.

Negative-Pressure Wound Therapy (NPWT)

Negative-pressure wound therapy is a therapeutic technique using a vacuum source that creates continuous or intermittent negative pressure inside the wound to remove fluid, exudates, and infectious materials to prepare the wound for healing and closure.

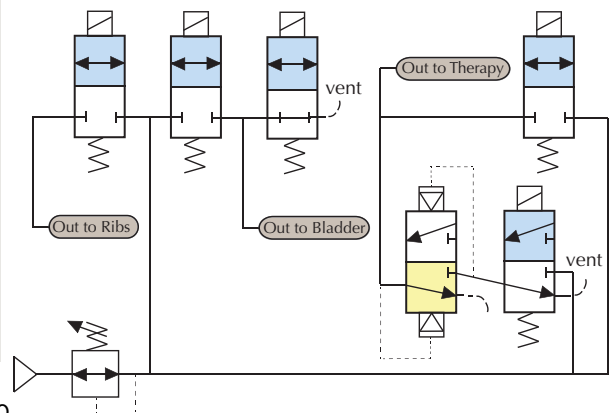


- **Saves** production time
- **Reduces** cost and labor for piping
- One part number **reduces** purchasing and assembly resources
- Complete “plug-and-play” assemblies
- Optimized system design **increases** performance
- Clippard products and assemblies are **100% tested**

Contact Clippard today to see how our engineering and application expertise can assist in the development of efficient, compact pneumatic assemblies for your next critical project.

Clippard has been successfully partnering with progressive companies in the design and development of innovative pneumatic solutions for both stationary and portable non-invasive topical wound therapy equipment.

Clippard’s miniature valves, actuators, fittings and regulators are ideal for these types of applications, especially with the addition of the Oxygen Clean and Analytical Series Electronic valves.



Clippard

7390 Colerain Avenue • Cincinnati, OH 45239
877-245-6247 • www.clippard.com

pneumatic solutions

wound therapy relevant products



10 & 15 mm Valves

These compact valves offer many features for design flexibility especially in applications with limited space. Available in 2-way or 3-way configurations, as Normally-Open or Normally-Closed, flow rates from 0.5 to 3.0 scfm are available dependent on the orifice size. Other features include highly-visible LED indicator light and manual override, quick response time, and multiple mounting and voltage options. [View more.](#)



EM Stud Mount Electronic Valves

At just over an inch tall, Clippard's EM valves feature a proven design, with high flow rates (0.55 to 0.75 scfm), fast shifting speed and extremely high cycle life, making this valve a "small wonder" for air and/or gas control, pilot control, and medical applications where space is limited, but performance is not. [View more.](#)



Stepper-Controlled Needle Valve

Utilizing the industry's most robust and powerful linear actuator, this high-flow proportional valve features 2% hysteresis, excellent linearity and a 2 ms reaction time. A flow range of 0 to 300 slpm is standard, however this product is highly modifiable. This "SCPV" is ideal in critical applications such as medical equipment requiring high resolution, high flow, and low hysteresis. [View more.](#)



Aluminum Manifolds

Manifolds are an efficient choice for grouping pneumatic components in applications where space is limited. Standard and custom designs available. [View more.](#)



Acrylic Subplates

Clear acrylic pneumatic circuit boards are designed to provide a compact and highly-efficient pneumatic control system, with the use of Clippard products. These boards simplify assembly, reduce piping and help assure the accuracy of connections. [View more.](#)

EV/ET/EC/EW Electronic Valves

The E Series pneumatic valves are precision-built 2- or 3-way control valves utilizing a unique, patented valving system. These valves are quiet, quick and produce consistent results. They accept low voltage and current signals, and convert them into high pressure pneumatic outputs. The small size makes them ideal for medical equipment applications. [View more.](#)



New High Flow Electronic Valves

These newly-designed 2-way valves provide 10 times the flow of Clippard's proven EV/ET/EC/EW series with an impressive 100 lpm @ 100 psig rate! In addition, small size, low power and stainless steel construction are also excellent features for medical environments. (Scheduled for Release Third Quarter, 2013).

Exhaust Valves

The JEV Exhaust Valves provide fast response times and high flow. This compact type valve is constructed of brass and is 100% tested to assure the highest quality. The JEV's primary function is to increase cylinder speed, however it also enables the use of smaller directional valves, longer control lines and can be used as a shuttle valve. [View more.](#)



Clippard

7390 Colerain Avenue • Cincinnati, OH 45239
877-245-6247 • www.clippard.com